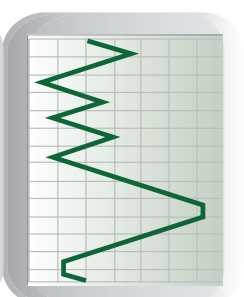


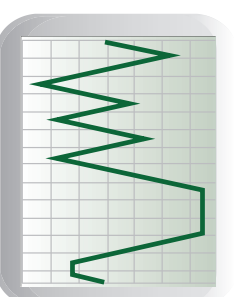
sterilization cycles

(ref. UNI EN 13060)

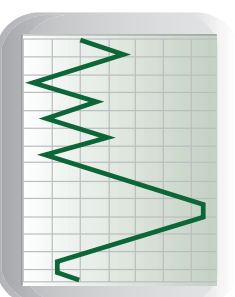
134° C class B



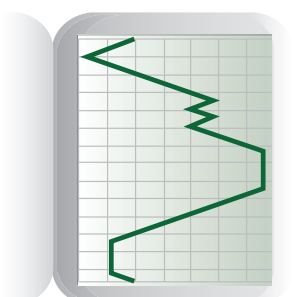
121° C class B



134° C prion



134° C class S



features

- sterilization temperature: 134°C
- sterilization pressure: 2.1 bar
- sterilization time: 5'
- drying time: 15'
- cycle time*: 1h 15'

- sterilization temperature: 121°C
- sterilization pressure: 1.1 bar
- sterilization time: 18'
- drying time: 15'
- cycle time*: 1h 25'

- sterilization temperature: 134°C
- sterilization pressure: 2.1 bar
- sterilization time: 20'
- drying time: 15'
- cycle time*: 1h 35'

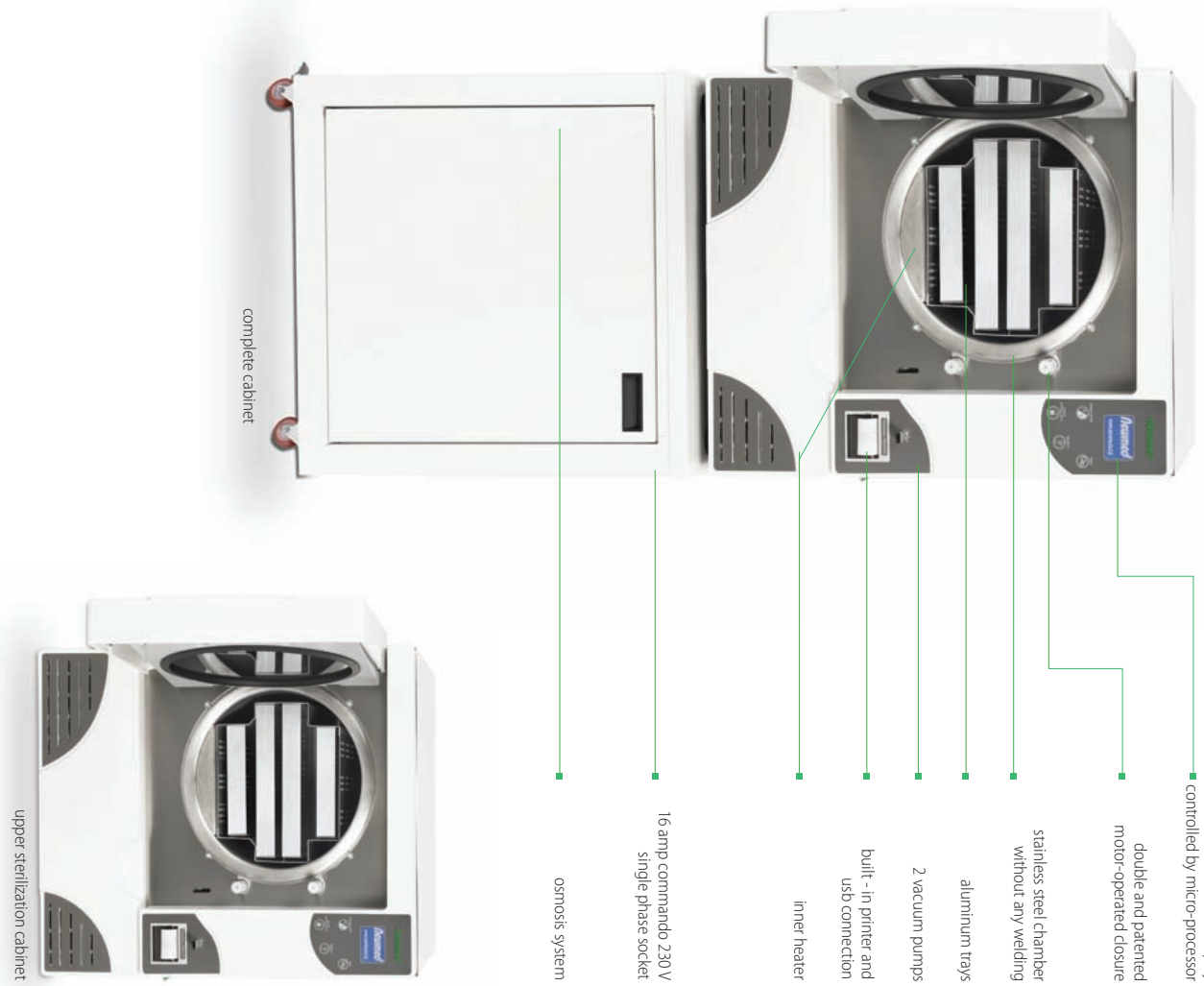
- sterilization temperature: 134°C
- sterilization pressure: 2.1 bar
- sterilization time: 5'
- drying time: 15'
- cycle time*: 1h

helix/b&d test

- sterilization temperature: 134°C
- sterilization pressure: 2.1 bar
- sterilization time: 3'30"
- cycle time*: 50'

vacuum test

- cycle time: 17'



multifunction display
controlled by micro-processor

double and patented
motor-operated closure

stainless steel chamber
without any welding

aluminum trays

2 vacuum pumps

built - in printer and
usb connection

inner heater

16 amp comando 230 V
single phase socket

osmosis system

complete cabinet



upper sterilization cabinet

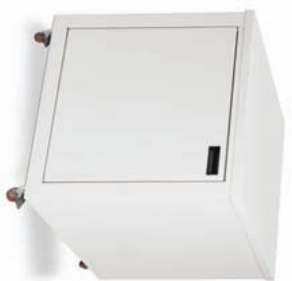
an extra-dry system can be activated
for each sterilization cycle

* Approx. cycle length calculated with warm chamber at full load

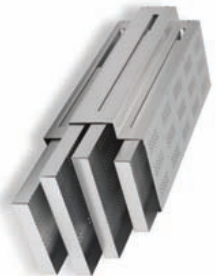


technical specifications

- CLASS B ref. UNI EN 13060
 - inner heater
 - overall dimensions/weight: (complete cabinet)
 - height: 820 mm (1600mm)
 - width: 680 mm (680mm)
 - depth: 783 mm (783mm)
 - weight: 146kg (204kg)*
 - chamber capacity:
 - volume: 59.9l
 - diameter/depth: 355 mm/605 mm
 - unwrapped material: 15 kg
 - wrapped material: 10 kg
 - porous loads: 7 kg
 - average water consumption: 3.5l per cycle **
 - power connection: 16A 230VAC 50Hz single phase
16 amp commando socket
- * Approx. value
** Average consumption depending on load and cycle types



■ lower cabinet



■ aluminium trays
(2x) 31 x 55 x 2,5 h cm
(2x) 22 x 55 x 2,5 h cm



■ reverse osmosis

Professional Sterilization Systems

Newmed was created to satisfy the needs of customers who demand safety, reliability and simplicity all in one sterilization equipment. And thanks to experience, technology and research, Newmed has been able to achieve this goal.

Newmed is ISO 9001 and UNI EN ISO 13485 certified



info@newmedautoclaves.co.uk | www.newmedautoclaves.co.uk
Tel: 01600 719 919

standard accessories



tiche
a new B class steam sterilizer

easy to use and energy saving

