



Veterinary Dental



new
PSPiX
imaging plate scanner



I WANT A SIMPLER AND MORE INTUITIVE SCANNER

PSPIX IS SO INTUITIVE THAT IT HAS NEVER BEEN SO EASY TO SCAN AN IMAGE

AMAZING SIZE

Created with cutting edge technology and design, the new PSPIX is the smallest and most compact PSP scanner on the market.

SO SIMPLE

The large color touchscreen provides intuitive indications for quick and easy use.

AVANT-GARDE DESIGN

With futuristic lines and elegant design, the new PSPIX fits perfectly within your veterinary practice.

TRUE INTELLIGENCE

Workflow has never been so smooth and efficient, through its outstanding intellectual ability. A real evolution in your working practice!



I WANT A HIGH LEVEL OF EXCELLENCE



OUTSTANDING PATIENT COMFORT

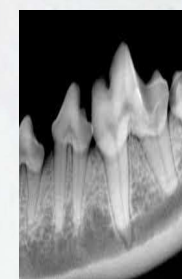
With increased flexibility, the wireless ACTEON imaging plates provide the best comfort for your patients.

These imaging plates are available in a wide range of sizes: 0, 1, 2, 3, 4*.

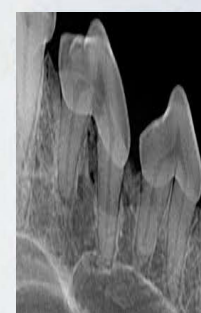


ENHANCED IMAGE QUALITY

PSPIX provides accurate, sharp and contrasted images to ensure reliable clinical diagnosis.



Size 0



Size 1



Size 2



Size 3



Size 4

SOFTWARE CAPABILITIES

PSPIX is delivered with Sopro Imaging software, already acclaimed by thousands of users for its ergonomics.

PSPIX is compatible with MAC® and Windows® operating systems.



* Computer reconstruction of size 4 image from two size 3 imaging plates.

I EXPECT THE BEST PROTECTION

PSPIX EXCEEDS YOUR EXPECTATIONS IN TERMS OF HYGIENE

● ACCESS AUTOCLAVABILITY

Only PSPIX provides such a high level of protection.

- PSPIX has removable parts which comply with thermal washer-disinfectors, the latest disinfection standards.
- PSPIX offers unique autoclavable parts* to eliminate risk of infection.

● OPTIMAL HYGIENE BARRIER

Hygiene is at the core of each operating step of PSPIX.

- Hygiene bags and covers ensure high degree of protection against cross-contamination.
- Soprowipes offer a perfect cleaning solution for the ACTEON imaging plates.
- The touchscreen stylus also allows a hygienic use.

* Optional autoclavable parts.





LET THE LIGHT GUIDE YOU...

Check the status of PSPIX
at a quick glance!



Blue: Available



Yellow: Occupied

CLICK & SCAN!

Save time with the new "Click and Scan" concept of PSPIX,
the simplest way to gain efficiency.
Select your workstation on the touchscreen, insert your imaging plate
and let PSPIX do the rest...

PSPIX can also be controlled
from your workstation.



FULLY AUTOMATED PROCESS

- AUTO-ACCESS: The door only opens when the imaging plate is inserted.
- AUTO-DETECT: PSPIX automatically detects the size of the inserted imaging plate.
- AUTO-SCAN: PSPIX scans and optimizes the image before displaying it into the right workstation.
- AUTO-EJECT: The imaging plate is automatically erased and ejected for an immediate reuse.
- ECO-MODE: PSPIX automatically switches to economic mode when not in use for an extended period of time.

TECHNICAL SPECIFICATIONS



SYSTEM

Theoretical resolution	20 lp/mm
Scan Time (fast mode)	1.6s - 2.7s
Scan Time (high definition mode)	2.1s - 3.6s
Connection	Ethernet RJ-45
Dimensions	L. 154 x D. 204 x H. 193mm
Weight	2.6kg
Operating voltage	100 ~ 240V, 50/60Hz

WINDOWS® MINIMUM CONFIGURATION REQUIRED

Operating system	Windows XP Pro SP3
Processor	Intel® Pentium IV - 1.3GHz
RAM	512MB
Hard disk	250GB
Graphic card	32MB RAM unshared memory compatible DirectX 9
Screen resolution	1024 x 768
Ethernet board	100Mb/s - 1Gb/s

MAC® MINIMUM CONFIGURATION REQUIRED

Computer	MacBook® Pro 13.3" or iMac® 21.5"
Operating system	Mac OS X Mavericks
Processor	Intel® Core 2
RAM	2GB
Ethernet board	1Gb/s

IMAGING PLATES

Dimensions IP Size 0	22 x 35mm
Dimensions IP Size 1	24 x 40mm
Dimensions IP Size 2	31 x 41mm
Dimensions IP Size 3	27 x 54mm
Dimensions IP Size 4 (2 x size3)	52 x 54mm

WINDOWS® RECOMMENDED CONFIGURATION

Operating system	Windows 7 Pro SP1
Processor	Intel Core i3
RAM	2GB
Hard disk	500GB
Graphic card	Chipset Nvidia® or ATI® 512MB unshared memory compatible DirectX 9 or more
Screen resolution	1280 x 1024 or more
Ethernet board	1Gb/s

MAC® RECOMMENDED CONFIGURATION

Computer	iMac 27"
Operating system	Mac OS X Mavericks or later
Processor	Intel Core i7
RAM	4GB
Ethernet board	1Gb/s