

All the
power you want

EBit60 vet



www.surgicalsystemsLtd.co.uk

CHISON
Value Beyond Imaging

Innovative design

15" LED monitor High Definition

Light Weight & Compact design 7.5 kg

30° adjustable, 180 °wide visuable angle

2 transducer sockets & holders

Thermal-backplane ventilation for better cooling

Removable battery for 120 minutes scanning





EBit understa

FHI

- An innovative harmonic technology that using different transmission and receiving methods for different body sized, to maximize the resolution without losing the penetration.
- Better than traditional THI and phased harmonic which compromise the penetration.



OFF



ON

X-contrast

- Adjust the contrast resolution to three levels according to the tissue difference.
- Activated by one key: Enhance, Normal , Suppress.



Enhance

Normal

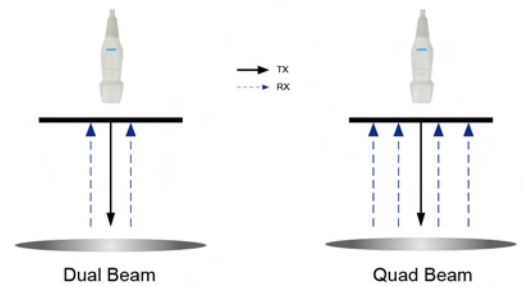
Suppress

nds your everyday



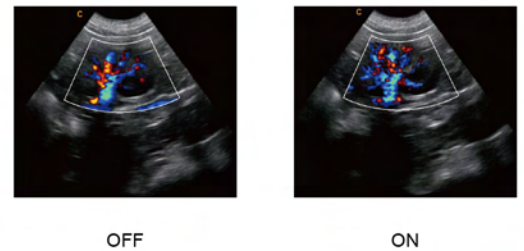
Q-beam

- Compared to the traditional dual-beam, EBit uses quad-beam to receive signal, thus doubles the volume of signal received as well as the frame rate.
- Higher frame rate ensures better diagnostic confidence and efficiency.



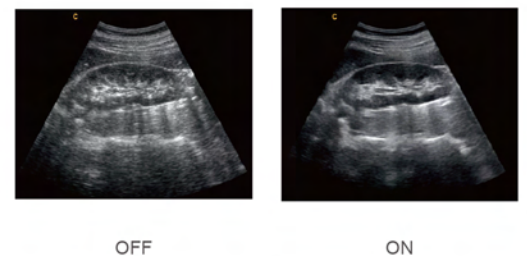
Q-flow

- This adaptive color detection technology can automatically adjust the criteria of color and noise assessment in different tissues.
- As a result, color sensitivity of low-velocity flow is greatly enhanced.



Q-image

- These innovative algorithms have strengthened the image enhancement results significantly.
- Advanced chipset is used to ensure fast frame rate.



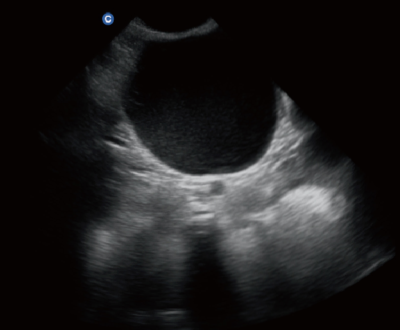
Premium Image Quality



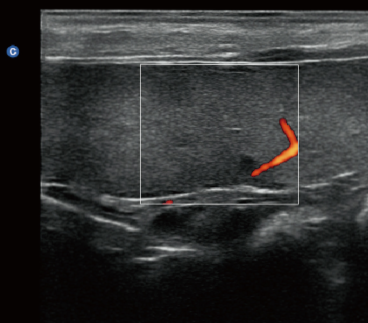
Canine Liver,B Mode



Canine Kidney,B Mode



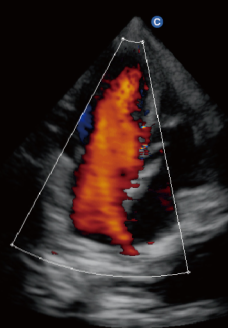
Canine Cyst,C Mode



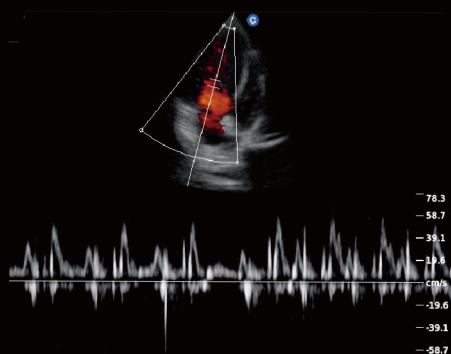
Canine Spleen,C Mode



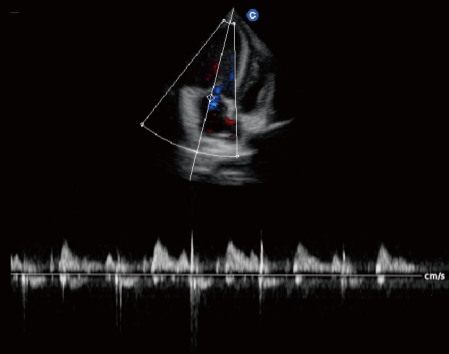
Canine Cardiac,B Mode



Canine Cardiac,C Mode



Canine Cardiac,PW Mode



Canine MV Regurgitation,CW Mode



SURGICAL SYSTEMS

Distributed in the UK by:
Surgical Systems Ltd,
Unit B,

Aquarius Centre,
Edison Close,
Waterwells Business Park,
Quedgeley,
Gloucestershire,
GL2 2FN

T: 01452 347 101

F: 01453 347 131

W: www.surgicalsystemsltd.co.uk

E: info@surgicalsystemsltd.co.uk

Wide Range of Probe Selection



2.0MHz-6.8MHz Convex
C3-E



4.0MHz-15.0MHz Linear
L7-E



7.0MHz-18.0MHz (with FHI) Linear
L12-E



1.0MHz-5.3MHz Phased array
P3-E



2.0MHz-6.8MHz Micro-Convex
MC3-E



5.0MHz-10.0MHz Linear Rectal
L7R-E



4.0MHz-10.7MHz Micro-Convex
MC5-E



4.0MHz-12.0MHz Micro-Convex
MC6-E



2.0MHz-8.0MHz Phased array
P6-E



4.0MHz-10.0MHz Linear Rectal
L7V-E

CHISON MEDICAL IMAGING CO., LTD.

Sales & Service Contact Address:

No. 9 Xin Hui Huan Road, New District, Wuxi, Jiang Su Province, China214028

TEL: 0086-510-85310593 / 85310937 FAX: 0086-510-85310726 EMAIL: export@chison.com.cn

We reserve the right to make changes to this catalogue without prior notice
Please contact our local dealer for the latest information.

