

# Dramiński **BLUE**

*See. Touch. Feel the difference.*



# BLUE

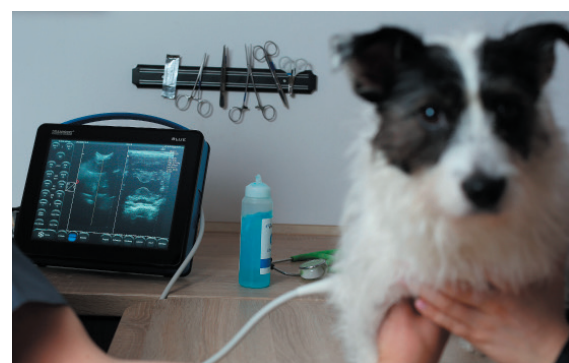
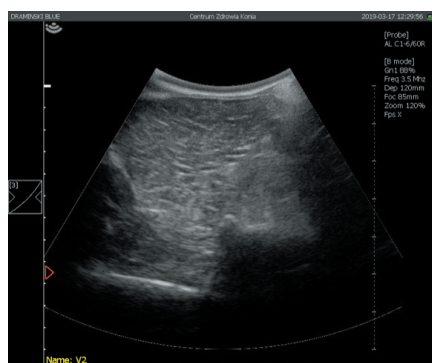
- Fast and precise
- Detailed examinations and FAST type protocols
- Doppler: Color, Power, Pulse
- For 24h clinics and small clinics



## Portable ultrasound scanner for the diagnosis of small animals

More examinations and more detailed information about the patient.

The ultrasound scanner provides fast and accurate treatment planning, which translates into an increased customer satisfaction and clinic profits.



### Future Technologies:



**LuciD™** a system that enhances contrast, sharpness and tissue differentiation making images readable and easy to interpret.



**D-Curve™** distinguishes between slight echogenicity differences – a transfer curve ideally suited to the human eye perception.



**Vi-Probe™** is a unique technology that provides phased array image type on the convex probe and convex image on the linear probe. BLUE provides enhanced vision, despite a small acoustic window.

### Technical data:

<b>Imaging modes</b>	B Mode, B+B Mode, 4B Mode, B+M Mode, Doppler: Color, Power, Pulse Wave
<b>Operating frequency</b>	1-14 MHz (probe type dependant)
<b>Frame memory and cine loop viewing</b>	100 GB
<b>Data record</b>	Images and cine loop viewing with description, patient data and date
<b>Data transmission to a data storage device</b>	Via USB interface
<b>Exported file format</b>	PNG for images, AVI, MP4, MOV for cine loop viewing
<b>Number of probe ports</b>	One port, automatic probe recognition
<b>External ports</b>	2 x USB 3.0, 2 x LAN, 1 x HDMI
<b>Monitor</b>	12" LED LCD display
<b>Feature control</b>	Capacitive touch panel
<b>Standby time</b>	Approx. 25 s
<b>Continuous operation time with battery supply</b>	Approx. 2 hours 30 min.
<b>Package charging time</b>	Approx. 4 hours.
<b>Accessories</b>	Wheel stand, Caster stand (low), Gel spacer
<b>Operating temperature</b>	From -15 °C to +45 °C
<b>Recommended storage temperature</b>	From 0 °C to +45 °C